



Beaufort County Public Works **Stormwater Infrastructure** *Project Summary*

Project Summary: Harding Street Outfall

Project #: 2009-082

Completed: Feb-09

Narrative Description of Project:

Project improved 485 L.F. of outfall ditch. Grubbed and cleared 485 L.F. of workshelf. Installed 260 L.F. of outfall pipe. Cleaned out 230 L.F. of outfall ditch. Installed (1) flap gate, (2) bleeder pipes, and (1) catch basin. Installed rip rap and hydroseeded for erosion control

Material Cost, Rental Equipment Summary, and Labor

Material	Unit	Cost/Unit	Qty	Cost
24" Aluminum Pipe	linear feet	\$10.62	30.0	\$318.60
12" HDPE Pipe	linear feet	\$4.86	40.0	\$194.40
18" HDPE Pipe	linear feet	\$8.71	260.0	\$2,264.60
4x4 Catch Basin	each	\$843.16	1.0	\$843.16
24" Flap Gate	each	\$417.02	1.0	\$417.02
Fill Dirt	ton	\$1.00	413.6	\$413.60
Rip Rap	ton	\$49.22	11.2	\$550.77
#57 Stone	ton	\$37.29	3.4	\$127.16
Asphalt Milling	ton	\$13.91	18.4	\$255.80
Filter Blanket	sy	\$0.48	97.2	\$46.67
Turf Staples	each	\$0.03	95.0	\$2.85
Silt Fence	sy	\$0.24	31.1	\$7.46
Silt Fence w/ Stakes	sy	\$0.78	3.9	\$3.03
Concrete Brick	each	\$0.33	101.0	\$33.33
Type "S" Cement	75lb bag	\$9.35	4.0	\$37.40
All Purpose Sand	50 bag	\$3.80	6.0	\$22.80
10-10-10 Fertilizer	bag	\$14.55	4.0	\$58.20
Hydrogel	cup	\$2.82	2.0	\$5.64
Hydromulch	bale	\$16.75	8.0	\$134.00
Hydromax Liquid Fertilizer	cup	\$2.93	4.0	\$11.72
Annual Rye Grass Seed	50lb bag	\$29.35	7.0	\$205.45
Water	gallon	\$0.01	2,000	\$20.00
Sediment Log	each	\$42.80	1.0	\$42.80
Pin Flags	each	\$0.06	4.0	\$0.24
4ft Flagger	each	\$0.34	10.0	\$3.40
Debris Disposal	ton	\$30.00	2.2	\$65.40
Debris Disposal	ton	\$16.00	70.5	\$1,127.20

Site Photographs

Before



During



After



Harding Street Outfall Project Summary Con't

Project #: 2009-082

Material Cost, Rental Equipment Summary, and Labor

Material	Unit	Cost/Unit	Qty	Cost
Gas	gallon	\$1.45	55.0	\$79.75
Diesel	gallon	\$1.76	505.0	\$888.80
Labor	hours		627.5	\$22,324.38
Total Cost of Materials, Rental Equip., and Labor				\$30,505.64

Note: Labor cost includes the employee's salary plus fringe benefits.

Equipment Cost

Item	Asset	Cost/Hour	Hrs.	Cost
Komatsu Urban Excavator	19325	\$37.50	44.0	\$1,650.00
Cat Dozer	23125	\$35.50	5.0	\$177.50
Bobcat T200	22782	\$17.40	22.0	\$382.80
Bobcat T300	22847	\$20.10	5.0	\$100.50
John Deere (444J) Loader	23271	\$29.75	4.0	\$119.00
Hydroseeder	18909	\$10.70	3.5	\$37.45
Dump Trucks		\$16.68	140.5	\$2,343.54
Pickup Trucks		\$5.43	202.0	\$1,096.86
Total Equipment Cost				\$5,907.65

Cost/hour excludes fuel cost.

Total Cost: \$36,413.29

Site Photographs

Before

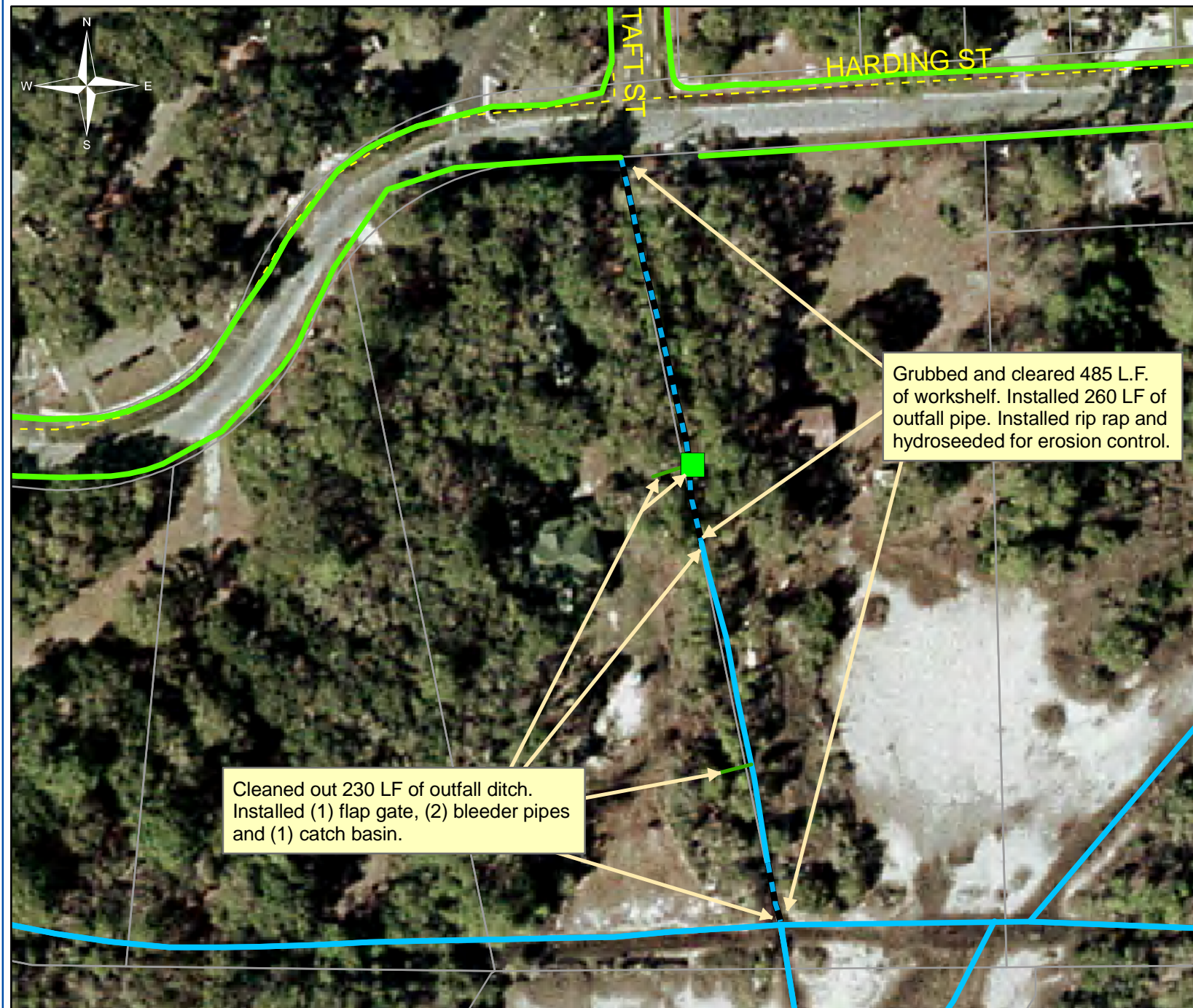


During



After





Project: Harding
Street Outfall

Activity: Pipe
Installation

Project #:
2009-082

Township: Port
Royal Island

Completed:
January 2009

Legend

Drainage Type

- River
- Stream
- Outfall
- Lateral
- Roadside
- Crossline
- D/W
- Access
- Piped
- Bleeder
- Parcels

Prepared By: BC Stormwater Management Utility

Date Print: 6/25/09

File: C:/sethdata/projects/projectmaps/Harding Street Outfall_2009_096